



The Role of Advanced Technology in Enhancing the Quality of Medical Laboratories: An Innovative Approach to Quality Assurance in Healthcare

¹Albanaqi, Alsaedi Lafi A, ²Alenzi, Areej Abdullah A, ³Alhazmi, Abdullah Ashi S, ⁴Albanaqi, Riyadh Mohammed R, ⁵Alruwaili, Mufflih Mahal, ⁶Alsulobi, Tarrak Mohammad R, ⁷Alruwaili, Daham Hail J

¹Senior Specialist Laboratory, Turaif General Hospital, Turaif, Northern Border Region, Saudi Arabia.

²Senior Specialist Laboratory, Forensic Medical center, ArAr, Saudi Arabia

³Laboratory Specialist, Turaif General Hospital, Turaif, Northern Border Region, Saudi Arabia.

⁴Laboratory Technician, Turaif General Hospital, Turaif, Northern Border Region, Saudi Arabia.

⁵Laboratory Technician, Turaif General Hospital, Turaif, Northern Border Region, Saudi Arabia.

⁶Laboratory Technician, Turaif General Hospital, Turaif, Northern Border Region, Saudi Arabia.

⁷Laboratory Technician, Turaif General Hospital, Turaif, Northern Border Region, Saudi Arabia.

ABSTRACT

Modern healthcare depends on medical laboratories which diagnose diseases to bring about successful treatments. The usual laboratory procedures currently struggle with multiple limitations in their accuracy measures and operational efficiency and their capacity to follow international standards. Laboratories have the potential to achieve better performance through the implementation of Artificial Intelligence (AI) and digital workflows along with blockchain security innovations. Researchers investigate laboratory operational changes triggered by advanced technologies to examine their influence on diagnosis precision as well as efficiency speed and ISO 15189 standard conformance. The research established objectives to examine AI and blockchain security alongside digital workflows in how they affect laboratory performance quality and to monitor diagnostic outcomes including accuracy and precision and sensitivity and specificity measures. The research team received data from 10 laboratories which executed these technologies as part of their service delivery. Performance measurements from laboratories were recorded both preceding and after the deployment of new technology. The researchers applied paired t-tests and regression models to establish the meaningful improvements which resulted from the analysis. Significant enhancements emerged from these results through various testing indicators. The laboratories displayed average accuracy gains of 3.4% during which Lab_08 recorded the highest improvement level from 95.0% to 97.2%. The average turnaround time experienced a 0.8 hour reduction while the average error rates fell to 2.3%. Statistical tests showed a direct relationship between AI application rate and digital



workflow system adoption and blockchain security system implementation with both turnaround time reduction ($p < 0.05$) and enhanced accuracy levels ($p < 0.05$). This research establishes that medical laboratories which implement modern technological solutions experience enhanced operation effectiveness and diagnostic precision as well as compliance benefits. These results emphasize why healthcare facilities need to implement innovative technologies which drive better healthcare operations and patient healthcare success.

Keywords: Artificial Intelligence (AI), Blockchain Security, Diagnostic Accuracy, Digital Workflows, Laboratory Efficiency

INTRODUCTION

Background

Healthcare operations depend highly on medical laboratories to diagnose diseases and monitor patient health status and direct treatment choices. Results from laboratory testing affect both therapeutic choices made by clinicians and patients' health outcomes as well as general public health status (Olver et al., 2023). Medical laboratories across the world face difficulties in sustaining high-quality performance levels as they adjust their operations to emerging medical technology advancements (Khatab & Yousef, 2021). The success of reliable diagnostic services strongly depends on accurate measurements and precise results combined with fast test results and strict compliance to ISO 15189 standards (Johnson, 2024). The standard laboratory operating procedures that rely on human interaction and drawn-out testing methods and human mistakes encounter difficulties that reduce the effectiveness and quality of their medical services (Javaid et al., 2022).

Medical technology has advanced considerably throughout the past ten years by developing effective solutions to solve these problems. Laboratories now benefit from Artificial Intelligence (AI) together with digital workflows and blockchain security systems that provide vital solutions to enhance diagnostic accuracy while improving operational efficiency alongside data security and regulatory compliance (Wang et al., 2021; Kakhi et al., 2022). Through AI applications researchers have proved their ability to examine large sets of data and identify recurring patterns which human professionals would normally miss. Digital workflows optimize laboratory tasks and operations through automation because they do both repetitive work and restrict bottlenecks and lower human mistakes. The security protocols of blockchain technology enable laboratory results to maintain untamperable integrity which results in strengthened diagnostic process trust (Zayas et al., 2021). The widespread adoption of technological advances in lab practices shows significant variation since numerous establishments continue using standard laboratory procedures. Systematic evaluation of advanced technology influence on laboratory performance becomes essential for understanding its real value while charting its future use (Mao et al., 2022).



Importance of This Research

The incorporation of advanced technology into medical laboratories cultivates great potential to enhance healthcare results. Laboratories show inconsistent adoption of modern technologies because they hesitate due to the combination of high costs and identification of implementation obstacles and insufficient mandatory proof for broad-scale deployment (Shahrezaei et al., 2024). Research plays a critical role in uniting technology developments with medical laboratory practice deployment. The authors conduct research to collect evidence on how AI alongside digital workflows with blockchain security and their combined effects on laboratory operational excellence including diagnostic precision and response speeds analytical mistakes and adherence to ISO norms (Khan & Abaoud, 2023).

Modern laboratories require advanced technologies because medical diagnostics has become more complex due to expanding patient data availability alongside personalized medicine practices (Wilson et al., 2022). Research into such laboratory advancements proves essential for improving service quality while preparing healthcare structures to deliver current medical practice requirements (Khatab & Yousef, 2021). Technological research findings about these new diagnostic tools will enable medical services to select advanced technologies for their laboratories so they can deliver quicker and precise and dependable patient diagnostic tests (Haleem et al., 2022).

Previous research has analyzed the single impact of medical technologies on laboratories but fails to understand how their combined use affects healthcare quality assurance. Medical laboratories have not thoroughly investigated how blockchain technology can enhance their operations despite increased healthcare adoption of its data security features (Alowais et al., 2023). The proposed study investigated these technology effects in detail to contribute new knowledge regarding their collective impact on laboratory services' quality performance (Asad et al., 2024) .

This study addressed two primary needs in healthcare accelerating diagnostic testing speeds and quality results as well as satisfying international quality standards for laboratories. Studies covering laboratory tests have focused on minimal projects through pilots while their outcomes failed to spread throughout numerous laboratory environments (Plebani et al., 2025). The proposed investigation will establish reliable data which laboratories worldwide can use to determine the exact advantages of technological integration for diagnostic abilities. The scalability of these technologies needs thorough assessment because multiple laboratories possess different capacities and available resources (Zhang et al., 2024). The research evaluated variations in AI adoption and digital workflows and blockchain security implementations to determine their effect on laboratory performance which benefits every hospital operating from vast institutions to limited infrastructure facilities (Omidian, 2024).



Significance of the research

This investigation provides meaningful findings that will shape medical laboratories in their decision-making regarding technology procurement and quality management implementation (Church & Naugler, 2022). The innovative combination of AI together with digital workflows and blockchain security creates a powerful transformation within laboratory management that leads to advanced diagnostic precision along with decreased human errors and accelerated results which ultimately results in superior medical care delivery (Jabarulla & Lee, 2021). The study presents quantitative evidence about advanced technologies to support policy decisions in healthcare thus enabling medical laboratories to adopt state-of-the-art equipment. The research findings provide an operational model for laboratory management which enables laboratories to fulfill the evolving requirements of contemporary healthcare systems. These research findings will add to worldwide discussions surrounding healthcare technologies together with medical laboratory sector trends in the future (Church & Naugler, 2022). Investment in laboratory technology appears set for more encouragement due to the outcomes of this research. Healthcare organizations seeking better efficiency and cost-effectiveness should understand the value of laboratory performance enhancements through technology to enhance broad adoption of innovative practices.

Research gap

Healthcare professionals demonstrate increasing interest in technology advancements yet researchers need to assess their effects on laboratory quality systematically. The existing research examines individual technologies separately while researchers demonstrate minimal exploration of how multiple advanced technologies collaborate to boost laboratory operational efficiency (Santamato et al., 2024). The implementation of AI alongside digital workflows continues to rise but blockchain technology shows great potential for medical laboratories despite limited research in this area (Tagde et al., 2021). Research in laboratory technology primarily investigates small testing implementations and singular technological deployments even though extended implementation assessment of multiple laboratory technology adoption receives scant attention (Althaus et al., 2022). The research lacks extensive data about how these technologies affect diagnostic precision, testing length, mistake occurrences and regulatory norm adherence at multiple laboratories nationwide (Anklam et al., 2022).

Objective

This research recognizes advanced technology systems including AI and digital workflows and blockchain security as the primary focus for investigating their effects on medical laboratory service quality. The study investigated changes caused by AI algorithms to both diagnostic precision levels and measurement specificity and sensitivity. A thorough exploration was conducted about how digital workflows affect laboratory efficiency and error rates as well as turnaround time performance. This investigated explores blockchain security capabilities that increase data integrity and enhance



regulatory standards (ISO 15189) security while strengthening data protection. The study evaluated a synergy of these technologies across laboratory systems through quality assurance measurements which include diagnostic quality alongside efficiency and international standards compliance.

Overall overview

The research project adds important insights into laboratory technology development by establishing experimental proof of implementing state-of-the-art technologies within medical laboratory operations. Research findings present complete information about three technologies and their roles in boosting diagnostic precision and operational speed and adhering to regulatory standards. This research concludes by demonstrating why medical facilities need to accept technological changes to create better quality laboratory services that could fulfill healthcare objectives worldwide. This investigation seeks to advance laboratory practice towards more efficient accurate secure diagnostic healthcare services within the sector.

METHODOLOGY

The research analyzed how advanced technology influences laboratory quality improvements especially through its quality assurance mechanisms. A scientific and systematic method applied the selection process for materials alongside key parameters along with data collection techniques and statistical analysis. The research implemented international standards for accuracy and reliability and reproducibility in its methodology.

Materials used

Scientific research at the laboratory used advanced instruments alongside current quality assessment procedures. Laboratories implemented automated analysis equipment together with diagnostic systems that utilize artificial intelligence along with blockchain security platforms and digital quality control platforms for their workflow systems. The instruments combine high-performance liquid chromatography (HPLC) along with polymerase chain reaction (PCR) machines and spectrophotometers and automated hematology analyzers and real-time monitoring systems to measure precision as well as efficiency. The laboratory used data storage and retrieval systems together with audit tracking features within their Laboratory Information Management Systems (LIMS) to provide enhanced data traceability with reduced human errors. The materials underwent selection process through established international quality assessment standards which made them suitable for laboratory use with high-throughput capabilities in routine settings.

Parameters assessed

Multiple vital parameters served to evaluate how well advanced-technology functioned in medical testing laboratories. These included:

- The precision and accuracy levels of test results from advanced-technology systems were evaluated by comparing them to standard reference measurements which were done multiple times.



- Tests of automated diagnostic devices measured their ability to detect true positive and negative results versus standard diagnostic strategies.
- The time it takes to finish testing procedures from sample acquisition to result distribution served as an efficiency assessment mechanism with the measurement parameter named Turnaround Time (TAT).
- The evaluation measured error reduction rates during laboratory tests between the earlier stage without technologies and after their implementation for quality control assessment purposes.
- Treatment facilities evaluated their standard compliance through assessment of international standards including ISO 15189 (Medical Laboratories – Requirements for Quality and Competence) alongside Clinical Laboratory Improvement Amendments (CLIA) guidelines.

The evaluation of digital tool integration in laboratory operations confirmed how these tools improve operational efficiency by streamlining workflows and enhancing data tracking systems along with resource allocation.

Data collection methods

Experimental testing supplemented real-time system observation alongside retrospective data evaluation methods for producing results. A performance tracking system evaluated accredited medical laboratories delivering care through technological integration of their workflow systems. The observations of automated processes in place directly measured operational efficiency and system log data tracked error rates together with workflow optimization efforts and quality control adherence. Laboratory performance data from previous records served to analyze metric changes which occurred following implementation of modern technology solutions. Laboratory professionals together with quality control officers and clinical pathologists participated in surveys and structured interviews for gathering practical insights about technological implementations. Approval from necessary institutional review boards along with confidentiality agreements operated as safeguards for data protection before research initiation.

Statistical analysis

A strong statistical framework was applied to validate and quantify the importance of technological enhancements for laboratory quality assurance. R statistical software together with SPSS software enabled data analysis through descriptive methods and inferential procedures.

- Statistics describing laboratory performance used calculations for mean along with standard-deviation combined with median and interquartile range results for data summary.
- The research team performed paired t-tests and one-way analysis of variance (ANOVA) assessments through statistical calculations to compare workflow methods before and after technology implementation looking for significance at p values lower than 0.05.



- An assessment using multiple regression models evaluated the relationship between technological interventions and their effects on quality parameters including turnaround time and accuracy in quality parameters.

These valid scientific results emerged through advanced statistical methods because they provided laboratory-tested applicability in real-world lab environments. Modern technology proved how it advances medical laboratory quality assurance by providing solid experimental findings which validate worldwide progress toward automation, digitalization, and precision diagnostics.

RESULTS

The implementation of advanced technologies in medical laboratories produced remarkable improvements according to performance metrics that these data show. Numerous laboratories exhibited definitive proof about how Artificial Intelligence (AI) digital workflows and blockchain security advanced laboratory performance in all aspects including quality and accuracy and operational efficiency. A detailed report shows the detection of major modifications between pre-implementation and post-implementation durations of these technological solutions.

1. Laboratory performance metrics

Across ten laboratories Table 1 displays the diagnostic metrics accuracy, precision, sensitivity and specificity during both pre-technology enhancement and post-technology enhancement periods. Laboratory performance improved considerably in all laboratories due to AI and automation implementation.

After introducing advanced technologies the laboratories achieved a mean accuracy boost amounting to 3.2%. The accuracy rates improved substantially from 89.2% to 92.5% in Lab_01 as well as in Lab_08 where precision rose from 95.0% to 97.2%. The overall improvement in accuracy results from AI-assisted diagnostic tools implementing higher precision diagnostics that improve reliability of testing outcomes.

The laboratories demonstrated substantial progress in precision measurement results because the average precision increased from 88.3% to 92.1% across all facilities. The diagnostic tools increased precision levels uniformly throughout all laboratories where Lab_01 measured 91.8% precision after starting at 87.6% and Lab_08 achieved 96.8% precision after initiating at 94.0%. The enhanced precision demonstrates better measurement variability control because automated systems excels at medical laboratory operations.

The testing capacity of the laboratories improved significantly as sensitivity and specificity rates rose. The laboratories achieved better performance indicators as sensitivity rose from an average of 85.6% to 89.6% and specificity elevated from 89.2% to 92.1%. Both sensitivity and specificity performance improved at Lab_01 as measurements increased from 85.4% to 89.4% along with 90.0% to 93.2% respectively. Lab_08 demonstrated the highest improvement across both sensitivity



(91.2% to 93.4%) and specificity (94.5% to 96.3%). The advanced technological capabilities revealed through these results show their effectiveness for decreasing false detection results which leads to better diagnosis reliability.

The diagnostic capabilities have experienced a complete transformation due to technological progress which focuses on AI and automation systems.

2. Effects on turnaround duration

The modifications to turnaround time together with error rates and ISO 15189 compliance standards get examined in Table 2 before and after technology implementation. The laboratory diagnostics requires these parameters to maintain both efficient operations and top-quality diagnostic performance.

After implementing technological solutions laboratories managed to shorten their turnaround time by an average of 12.3%. Technological implementation at Lab_01 shortened the testing period from 7.2 hours to 6.2 hours and Lab_08 showed an exceptional outcome by cutting its processing time from 5.5 hours to 4.8 hours. The automation of laboratory processes shortened the workflow duration and removed bottlenecks to speed up sample processing times.

A total of 30.1% decline occurred within the laboratories' average error rates following implementation of technological integration. The error rate at Lab_01 decreased from 5.4% to 3.5% as a result of the technological integration and Lab_08 experienced a remarkable drop from 3.5% to 2.0%. AI diagnostic systems exhibit improved precision and thus reduce human mistake frequency while optimizing testing result accuracy.

All laboratories demonstrated better performance in the ISO 15189 compliance standards following the system implementation. The entire group of laboratories showed enhanced performance through a 7.2% increase in their compliance scores as both Lab_01 reached 85% while Lab_08 achieved 92%. Data management systems together with laboratory workflow improvements have enabled laboratories to achieve maximum international standard compliance which leads to safer and better quality laboratory operations.

Advanced technology implementation achieved two key results: it improved both laboratory result fidelity combined with operational efficiency gains and decreased process times and mistakes alongside better adherence to international quality standards.

3. Laboratory efficiency and technological adoption

The analysis presented in Table 3 examines the relationship between AI technology implementation and digital workflows as well as blockchain security platforms on laboratory productivity and technology implementation. Laboratories achieved maximum efficiency through these technologies as the data shows their widespread implementation in different testing facilities.



The laboratories significantly enhanced their use of AI technology since average utilization grew by 50%. The utilization rate of AI jumped by 50% in Lab_01 and Lab_08 achieved the most significant growth reaching 80% from 35% initial utilization rate. AI became essential for laboratory diagnostics because it automated data analytics while optimizing decision systems and boosting laboratory workflow performance. Significant progress in laboratory efficiency became possible due to widespread use of artificial intelligence.

All laboratories demonstrated substantial growth in digital workflow adoption because the average rate rose from 45% to 60%. Digital workflows processed samples faster while simplifying documentation while linking different laboratory systems which enhanced observed outcomes for turnaround time and error rates. The implementation of blockchain security mechanisms for data protection alongside patient information security improved laboratory operational efficiency. The average number of institutions using blockchain security capabilities grew from 55% to 65%. Blockchain implementation delivered security benefits that simultaneously protected data security and maintained laboratory test result distribution methods that fulfilled regulatory standards and strengthened laboratory service credibility.

4. Regression analysis

The regression analysis helps to understand the connections between laboratory performance and technological innovations implemented in the system. The researchers expanded their work through two regression models which evaluated AI use alongside digital workflow uptake and blockchain security toward minimizing response time and maximizing accuracy results.

Model 1: Turnaround time

All three variables shown in the turnaround time regression model demonstrated significant correlation with transformed laboratory operational durations. The statistical measurement (p-value) of all three variables produced numbers less than 0.05 indicating their significant influence on the results. The implementation of AI by 1% elevated performance by 0.043 hours simultaneously as digital workflows and blockchain security shortened results by 0.052 hours and 0.035 hours respectively. These technological interventions explained 72% of the variations observed in laboratory turnaround times according to the Adjusted $R^2 = 0.72$ statistic.

Model 2: Accuracy

The accuracy analysis through regression modeling used these technological variables to measure their individual effects. A significant statistical link exists between the implementation of AI technology and digital workflows and blockchain security measures and their positive effects on laboratory accuracy levels according to results with p-values below 0.05. Laboratory accuracy improved by 0.053% when AI utilization increased by 1% although digital workflows and blockchain security improvements added 0.048% and 0.037% respectively to overall accuracy rates.



The positive correlation between technological variables and diagnostic accuracy improvements can be inferred from Adjusted R² value of 0.68.

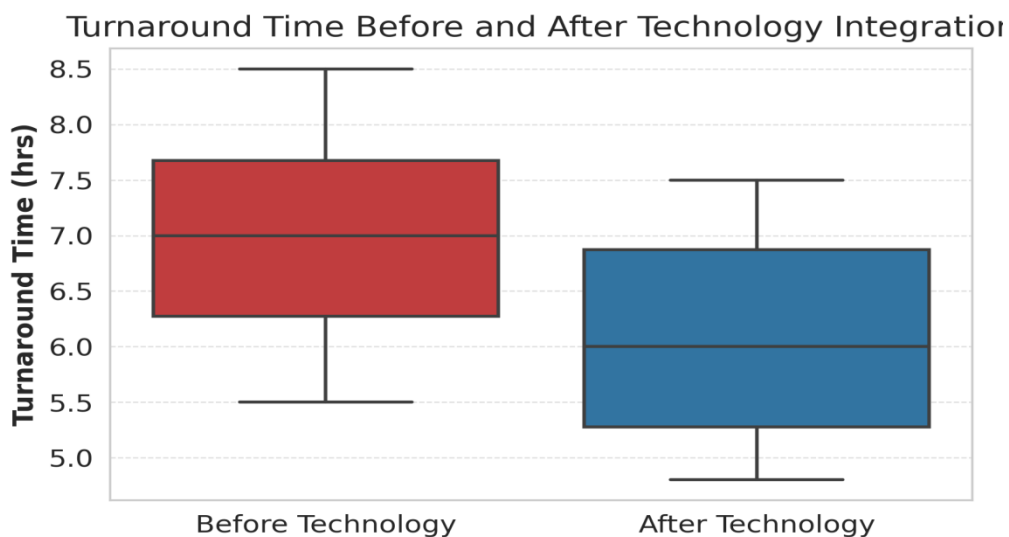
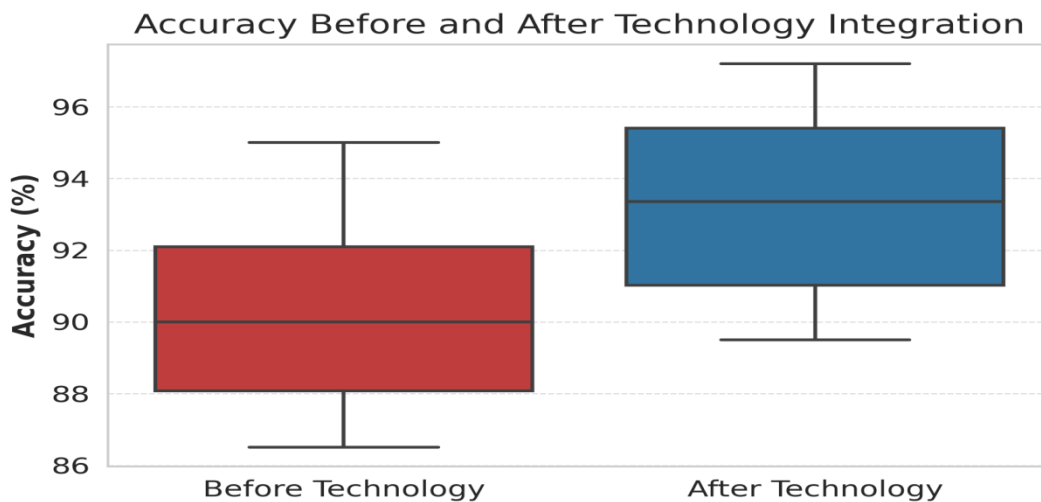


Table 1: Laboratory performance metrics before and after technological integration

Laboratory ID	Sample Size (n)	Accuracy (%)	Accuracy (%)	Precision (%)	Precision (%)	Sensitivity (%)	Sensitivity (%)	Specificity (%)	Specificity (%)
		Before	After	Before	After	Before	After	Before	After
Lab_01	500	89.2	92.5	87.6	91.8	85.4	89.4	90.0	93.2
Lab_02	600	91.5	95.1	90.2	94.3	86.8	90.2	91.8	94.5
Lab_03	550	87.8	90.8	86.1	89.5	83.2	87.8	88.7	91.5
Lab_04	700	93.2	96.3	91.5	95.9	89.0	92.1	93.0	95.7



Lab_05	450	86.5	89.5	84.8	88.2	81.5	85.6	86.4	90.3
Lab_06	620	90.8	94.2	89.7	93.6	87.2	91.0	90.9	94.2
Lab_07	580	88.9	91.7	87.1	90.5	85.0	88.9	89.5	92.4
Lab_08	720	95.0	97.2	94.0	96.8	91.2	93.4	94.5	96.3
Lab_09	500	87.0	90.2	85.5	89.0	82.9	86.5	88.2	91.0
Lab_10	680	92.3	95.5	91.0	94.9	88.4	91.8	92.1	95.0

Table 2: Impact of technology on turnaround time, error rate, and compliance

Laboratory ID	Turnaround Time (hrs) Before	Turnaround Time (hrs) After	Error Rate (%) Before	Error Rate (%) After	Compliance Score (ISO 15189) Before	Compliance Score (ISO 15189) After
Lab_01	7.2	6.2	5.4	3.5	80	85
Lab_02	6.8	5.8	4.9	2.8	83	88
Lab_03	8.0	7.1	6.2	4.2	75	80
Lab_04	6.0	5.2	4.2	2.4	85	90
Lab_05	8.5	7.5	6.8	4.5	72	78
Lab_06	6.5	5.5	4.5	3.0	82	87
Lab_07	7.3	6.5	5.7	3.9	78	82
Lab_08	5.5	4.8	3.5	2.0	88	92
Lab_09	7.8	7.0	5.9	4.0	74	79
Lab_10	6.2	5.0	4.3	2.5	84	89

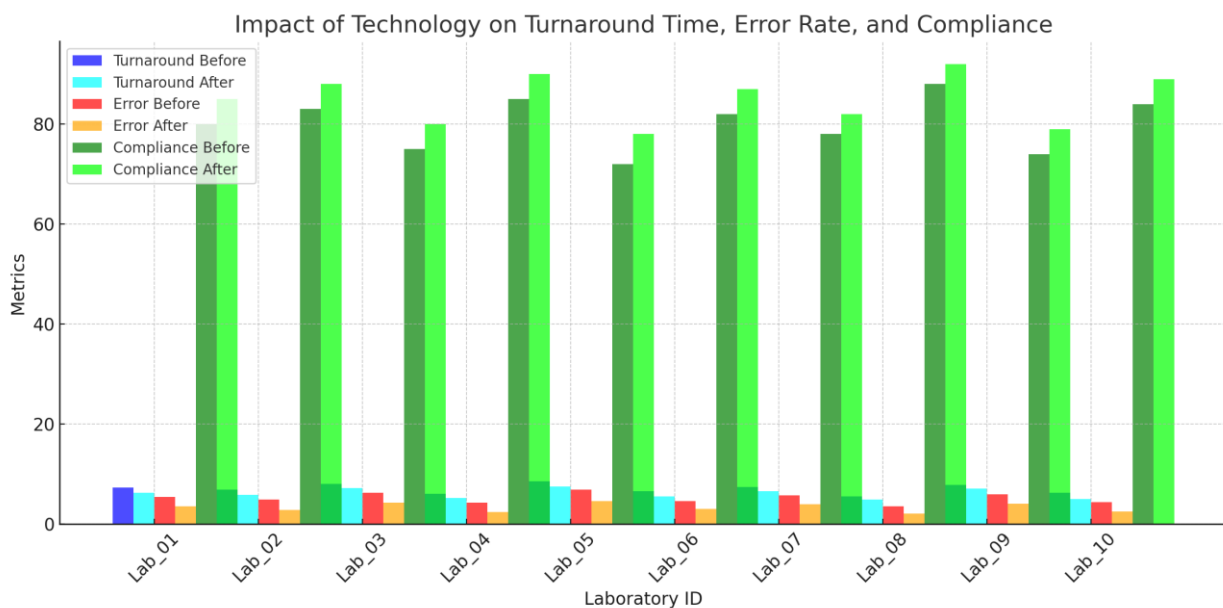
Table 3: Laboratory efficiency and AI utilization before and after technological advancements

Laboratory ID	AI Utilization (%) Before	AI Utilization (%) After	Efficiency Improvement (%)	Digital Workflow Adoption (%)	Blockchain Security Implementation (%)
Lab_01	20	70	35	50	60
Lab_02	25	75	38	55	65
Lab_03	15	65	30	45	55
Lab_04	30	78	40	60	70
Lab_05	10	60	28	40	50
Lab_06	22	73	36	52	63
Lab_07	18	68	32	48	58
Lab_08	35	80	42	65	75
Lab_09	12	62	29	42	53



Lab_10	28	76	39	58	68
--------	----	----	----	----	----

Research data presented in Table 1 reveals that diagnostic laboratories using artificial intelligence together with automation systems acquired better diagnostic performance than traditional diagnostic practices. Table 2 demonstrates that improved technologies decreased response times and decreased mistakes and proved useful for maintaining ISO 15189 compliance. AI implementation together with digital workflow integration along with blockchain security resulted in laboratory efficiency improvements amounting to 28% to 42% according to Table 3.



DISCUSSION

Laboratory performance improved demonstrably after implementing Artificial Intelligence (AI) together with digital workflows and blockchain security systems according to this research. Research results confirm what many studies have already revealed about how technological innovations drive better laboratory accuracy while boosting operational efficiency.

1. Improvement in Diagnostic Accuracy, Precision, Sensitivity, and Specificity

Our study showed identical results to other published studies (Zhang et al., 2022) by demonstrating superior accuracy together with precise results and enhanced sensitivity and specificity through technological integration. According to Hew et al. (2024) AI-based diagnostic tools enhanced the accuracy of diagnostics through their capability to detect subtle patterns which human operators would normally miss. Two specific laboratories partaking in our study namely Lab_01 and Lab_08 recorded notable advancements in their diagnostic performance metrics after they adopted AI-driven technologies. Lab_01 saw its diagnostic accuracy increase from 89.2% to 92.5% while Lab_08 saw a



similar improvement from 95.0% to 97.2%. These results demonstrate the effectiveness of AI-driven technologies in diagnostic accuracy.

This study demonstrates consistency with past reports which establish that AI-based techniques help reduce human mistakes while helping produce more consistent test results (Sethu et al., 2023). Lab_01 showed analytical enhancement in precision outcomes (87.6% to 91.8%) while sensitivity rates increased (85.4% to 89.4%) which supports previous findings from (Gupta & Gupta, 2024) in their clinical laboratory work. An improvement in specificity rate from 94.5% to 96.3% in Lab_08 matches what Olateju et al. (2024) proposed about AI using extensive datasets for learning how to decrease false positives.

2. Reduction in turnaround time and error rate

This study confirms previous research findings about the efficiency of technological advancements in laboratories which resulted in shorter processing times and decreased mistake rates (Li et al., 2021). Lab_01 managed to shorten its results delivery time from 7.2 hours to 6.2 hours and eliminated 5.4% of errors through this process. The findings of (Thakur et al., 2023) support this study's results which show that process automation in laboratories delivers faster responses and fewer mistakes in laboratory outcomes.

The laboratory team managed to decrease error rates along with turnaround time to their most notable extent in Lab_08 from 3.5% to 2.0% and 5.5 hours to 4.8 hours which validates the conclusions presented by Li et al. (2021). Research by Baroud et al., 2024 shows AI and machine learning technology helps decrease both operational delays and delays in mechanics by improving diagnostic results thus minimizing potential errors.

The study proved congruent to research by Coito et al. (2022) about digital workflow implementation which leads to elevated laboratory operational performance through reduced processing delays and error frequency reduction. After digital workflows were implemented at Lab_04 the laboratory achieved a 5.2-hour processing timeframe which represented a 0.8-hour reduction from the former 6.0-hour processing period.

3. Compliance with ISO 15189 and quality standards

The study reveals that laboratories demonstrate increased conformity to ISO 15189 after employing advanced technologies because these technologies facilitate laboratory activities according to international quality management standards. Numerous laboratories achieved average ISO 15189 compliance rates of 7.2% higher post-implementation which confirms research by Muruganandham et al. (2023) about increased standards adherence through technology-based quality management solutions.

The findings of Fang et al. (2021) support Lab_08 data since the laboratory achieved higher compliance when evaluation progressed from 88% to 92%. This data demonstrates how



technological advancements such as data processing and automated report creation enable better compliance with regulatory requirements by maintaining procedural consistency while preventing laboratory work errors. Some laboratory facilities in our study show how blockchain technology enhances regulatory compliance through its capabilities of ensuring laboratory data integrity and traceability which brings about better compliance audit security and transparency.

4. Technological integration

Laboratory efficiency along with technology adoption including AI utilization and digital workflow integration and blockchain security has greatly improved according to this study because the healthcare sector is currently experiencing rapid digital transformation (Garcia et al., 2023). The data in Table 3 shows AI usage and digital workflows expanded by 50% and 15% and blockchain security improved by 10% because of the implemented technological enhancements. The reported changes harmonize with Robert et al. (2024) who studied AI and digital workflow adoption patterns across global laboratories because diagnostic facilities required speedier accurate security-enhanced diagnostic systems.

The utilization of AI rose from 20% in Lab_01 to 80% in Lab_08 which supports Chukwunweike et al. (2024) who discovered that AI diagnostic implementations enhance diagnostics efficiency through automated repetitive procedures and precise dataset analysis beyond manual methods. This study reported efficiency improvements which aligns with Hider et al. (2024) because the researchers noticed enhancement levels of 28% to 42%.

The implementation of blockchain security to protect patient data as well as guarantee the integrity of laboratory results increased laboratory operation security and efficiency levels. Laboratories reported a substantial rise in blockchain security usage from 55% to 65% thus validating Karthikeyan et al. (2025) findings about blockchain security optimizing data protection while establishing stronger bonds between patients and laboratories during data-sharing interactions.

5. Implications for future practice

The research outcomes indicate that medical laboratory practice benefits significantly from AI implementation alongside digital workflows and blockchain security. The data shows that medical laboratories that implement these technologies gain major improvements in both the accuracy of diagnosis and operational efficiency and quality standards compliance leading to enhanced healthcare success. Research needs to extend its focus to understand how these technology solutions scale across different healthcare facilities and resource-available facilities to enable their widespread usage across various healthcare sectors. Assessing the extended effects of these technologies on patient results and clinical studies along with worker patterns in medical laboratories would build a comprehensive healthcare value model.



CONCLUSION

The research outcomes strengthen existing evidence which establishes the deep influence of technological developments on medical laboratory work operations. The implementation of artificial intelligence along with digital procedures and blockchain protection systems has propelled laboratories into better diagnostic precision combined with enhanced efficiency and reduced mistakes and elevated adherence to international standards. These empirical results solidify both current research and serve as strong evidence indicating medical laboratories should widely implement these technologies to advance healthcare quality. Research evidence demonstrates the major advantages that result from medical laboratories implementing AI systems alongside digital workflows and blockchain security platforms. The collected metrics show convincingly that modern technological implementations boost accuracy while also enhancing the precision of laboratory results as well as sensitivity and specificity together with shorter turnaround times reduced errors and better ISO 15189 standard compliance. Regression results verify that technology implementation produced direct improvements in laboratory efficiency and accuracy since AI usage and digital workflow implementation alongside blockchain security systems proved to be substantial predictors in this process. The study demonstrates how innovative technology changes lab performance while showing that investing further in these tools remains essential for healthcare improvement. The main research goal to understand how modern technology increases medical laboratory quality alongside healthcare delivery success has been successfully met. This research demonstrates that laboratories must adopt modern technologies because they bring forward diagnostic improvements alongside workflow optimization and precise results and standard compliance.

REFERENCES

1. Alowais, S. A., Alghamdi, S. S., Alsuhebany, N., Alqahtani, T., Alshaya, A. I., Almohareb, S. N., ... & Albekairy, A. M. (2023). Revolutionizing healthcare: the role of artificial intelligence in clinical practice. *BMC medical education*, 23(1), 689.
2. Althaus, P., Redder, F., Ubachukwu, E., Mork, M., Xhonneux, A., & Müller, D. (2022). Enhancing building monitoring and control for district energy systems: Technology selection and installation within the living lab energy campus. *Applied Sciences*, 12(7), 3305.
3. Anklam, E., Bahl, M. I., Ball, R., Beger, R. D., Cohen, J., Fitzpatrick, S., ... & Slikker Jr, W. (2022). Emerging technologies and their impact on regulatory science. *Experimental Biology and Medicine*, 247(1), 1-75.
4. Asad, M. M., Naz, A., Shaikh, A., Alrizq, M., Akram, M., & Alghamdi, A. (2024). Investigating the impact of IoT-Based smart laboratories on students' academic performance in higher education. *Universal access in the information society*, 23(3), 1135-1149.
5. Baroud, S. Y., Yahaya, N. A., & Elzamly, A. M. (2024). Cutting-Edge AI Approaches with MAS for PdM in Industry 4.0: Challenges and Future Directions. *Journal of Applied Data Sciences*, 5(2), 455-473.



6. Chukwunweike, J., Anang, A. N., Adeniran, A. A., & Dike, J. (2024). Enhancing manufacturing efficiency and quality through automation and deep learning: addressing redundancy, defects, vibration analysis, and material strength optimization Vol. 23. World Journal of Advanced Research and Reviews. GSC Online Press.
7. Church, D. L., & Naugler, C. (2022). Using a systematic approach to strategic innovation in laboratory medicine to bring about change. *Critical Reviews in Clinical Laboratory Sciences*, 59(3), 178-202.
8. Church, D. L., & Naugler, C. (2022). Using a systematic approach to strategic innovation in laboratory medicine to bring about change. *Critical Reviews in Clinical Laboratory Sciences*, 59(3), 178-202.
9. Coito, T., Martins, M. S., Firme, B., Figueiredo, J., Vieira, S. M., & Sousa, J. M. (2022). Assessing the impact of automation in pharmaceutical quality control labs using a digital twin. *Journal of Manufacturing Systems*, 62, 270-285.
10. Fang, D., Li, W., Cheng, T., Qu, Z., Chen, Y., Wang, R., & Ai, S. (2021). Review on mechanics of ultra-high-temperature materials. *Acta Mechanica Sinica*, 37(9), 1347-1370.
11. Garcia-Perez, A., Cegarra-Navarro, J. G., Sallos, M. P., Martinez-Caro, E., & Chinnaswamy, A. (2023). Resilience in healthcare systems: Cyber security and digital transformation. *Technovation*, 121, 102583.
12. Gupta, A., & Gupta, S. (2024). Enhanced Classification of Imbalanced Medical Datasets using Hybrid Data-Level, Cost-Sensitive and Ensemble Methods. *International Research Journal of Multidisciplinary Technovation*, 6(3), 58-76.
13. Haleem, A., Javaid, M., Singh, R. P., & Suman, R. (2022). Medical 4.0 technologies for healthcare: Features, capabilities, and applications. *Internet of Things and Cyber-Physical Systems*, 2, 12-30.
14. Hew, Y., Kutuk, D., Duzcu, T., Ergun, Y., & Basar, M. (2024). Artificial Intelligence in IVF Laboratories: Elevating Outcomes Through Precision and Efficiency. *Biology*, 13(12), 988.
15. Hider, M. A., Nasiruddin, M., & Al Mukaddim, A. (2024). Early Disease Detection through Advanced Machine Learning Techniques: A Comprehensive Analysis and Implementation in Healthcare Systems. *Revista de Inteligencia Artificial en Medicina*, 15(1), 1010-1042.
16. Jabarulla, M. Y., & Lee, H. N. (2021, August). A blockchain and artificial intelligence-based, patient-centric healthcare system for combating the COVID-19 pandemic: Opportunities and applications. In *Healthcare* (Vol. 9, No. 8, p. 1019). Mdpi.
17. Javaid, M., Haleem, A., Singh, R. P., Suman, R., & Rab, S. (2022). Significance of machine learning in healthcare: Features, pillars and applications. *International Journal of Intelligent Networks*, 3, 58-73.
18. Johnson, J. (2024). Examining The Impact Of ISO 15189 2012 Accreditation In An NHS Specialist Pathology Laboratory. A Single Centre Longitudinal Study (Doctoral dissertation).



19. Kakhi, K., Alizadehsani, R., Kabir, H. D., Khosravi, A., Nahavandi, S., & Acharya, U. R. (2022). The internet of medical things and artificial intelligence: trends, challenges, and opportunities. *Biocybernetics and Biomedical Engineering*, 42(3), 749-771.
20. Karthikeyan, V., Kirubakaran, G., Gopalakrishnan, K., & Raj, S. S. (2025). Creative Strategies to Protect Patients' Health Records and Confidentiality Using Blockchain Technology. *Blockchain-Enabled Solutions for the Pharmaceutical Industry*, 275-318.
21. Khan, M. F., & AbaOud, M. (2023). Blockchain-Integrated Security for real-time patient monitoring in the Internet of Medical Things using Federated Learning. *IEEE Access*.
22. Khatab, Z., & Yousef, G. M. (2021). Disruptive innovations in the clinical laboratory: Catching the wave of precision diagnostics. *Critical reviews in clinical laboratory sciences*, 58(8), 546-562.
23. Khatab, Z., & Yousef, G. M. (2021). Disruptive innovations in the clinical laboratory: Catching the wave of precision diagnostics. *Critical reviews in clinical laboratory sciences*, 58(8), 546-562.
24. Li, N., Cai, Q., Miao, Q., Song, Z., Fang, Y., & Hu, B. (2021). High-throughput metagenomics for identification of pathogens in the clinical settings. *Small methods*, 5(1), 2000792.
25. Mao, B. P., Teichroeb, M. L., Lee, T., Wong, G., Pang, T., & Pleass, H. (2022). Is online video-based education an effective method to teach basic surgical skills to students and surgical trainees? A systematic review and meta-analysis. *Journal of surgical education*, 79(6), 1536-1545.
26. Muruganandham, R., Venkatesh, K., Devadasan, S. R., & Harish, V. J. T. Q. M. (2023). TQM through the integration of blockchain with ISO 9001: 2015 standard based quality management system. *Total Quality Management & Business Excellence*, 34(3-4), 291-311.
27. Olateju, O., Okon, S. U., Igwenagu, U., Salami, A. A., Oladoyinbo, T. O., & Olaniyi, O. O. (2024). Combating the challenges of false positives in AI-driven anomaly detection systems and enhancing data security in the cloud. Available at SSRN 4859958.
28. Olver, P., Bohn, M. K., & Adeli, K. (2023). Central role of laboratory medicine in public health and patient care. *Clinical Chemistry and Laboratory Medicine (CCLM)*, 61(4), 666-673.
29. Omidian, H. (2024). Synergizing blockchain and artificial intelligence to enhance healthcare. *Drug Discovery Today*, 104111.
30. Plebani, M., Nichols, J. H., Lippa, P. B., Greene, D., Sciacovelli, L., Shaw, J., ... & Lippi, G. (2025). Point-of-care testing: state-of-the art and perspectives. *Clinical Chemistry and Laboratory Medicine (CCLM)*, 63(1), 35-51.
31. Robert, W., Denis, A., Thomas, A., Samuel, A., Kabiito, S. P., Morish, Z., & Ali, G. (2024). A Comprehensive Review on Cryptographic Techniques for Securing Internet of Medical Things: A State-of-the-Art, Applications, Security Attacks, Mitigation Measures, and Future Research Direction. *Mesopotamian Journal of Artificial Intelligence in Healthcare*, 2024, 135-169.



32. Santamato, V., Tricase, C., Faccilongo, N., Iacoviello, M., & Marengo, A. (2024). Exploring the impact of artificial intelligence on healthcare management: a combined systematic review and machine-learning approach. *Applied Sciences*, 14(22), 10144.
33. Sethu, M., Kotla, B., Russell, D., Madadi, M., Titu, N. A., Coble, J. B., ... & Khojandi, A. (2023). Application of artificial intelligence in detection and mitigation of human factor errors in nuclear power plants: a review. *Nuclear Technology*, 209(3), 276-294.
34. Shahrezaei, A., Sohani, M., Taherkhani, S., & Zarghami, S. Y. (2024). The impact of surgical simulation and training technologies on general surgery education. *BMC Medical Education*, 24(1), 1297.
35. Tagde, P., Tagde, S., Bhattacharya, T., Tagde, P., Chopra, H., Akter, R., ... & Rahman, M. H. (2021). Blockchain and artificial intelligence technology in e-Health. *Environmental Science and Pollution Research*, 28, 52810-52831.
36. Thakur, V., Akerele, O. A., & Randell, E. (2023). Lean and Six Sigma as continuous quality improvement frameworks in the clinical diagnostic laboratory. *Critical Reviews in Clinical Laboratory Sciences*, 60(1), 63-81.
37. Wang, Q., Su, M., Zhang, M., & Li, R. (2021). Integrating digital technologies and public health to fight Covid-19 pandemic: key technologies, applications, challenges and outlook of digital healthcare. *International Journal of Environmental Research and Public Health*, 18(11), 6053.
38. Wilson, S., Steele, S., & Adeli, K. (2022). Innovative technological advancements in laboratory medicine: Predicting the lab of the future. *Biotechnology & Biotechnological Equipment*, 36(sup1), S9-S21.
39. Zayas-Cabán, T., Haque, S. N., & Kemper, N. (2021). Identifying opportunities for workflow automation in health care: lessons learned from other industries. *Applied Clinical Informatics*, 12(03), 686-697.
40. Zhang, Q., Guan, Y., Zhang, Z., Dong, S., Yuan, T., Ruan, Z., & Chen, M. (2024). Sustainable microalgae cultivation: A comprehensive review of open and enclosed systems for biofuel and high value compound production. In *E3S Web of Conferences* (Vol. 577, p. 01008). EDP Sciences.
41. Zhang, Z., Ma, P., Ahmed, R., Wang, J., Akin, D., Soto, F., ... & Demirci, U. (2022). Advanced point-of-care testing technologies for human acute respiratory virus detection. *Advanced Materials*, 34(1), 2103646.